



Enhance Your Airport Transit Experience

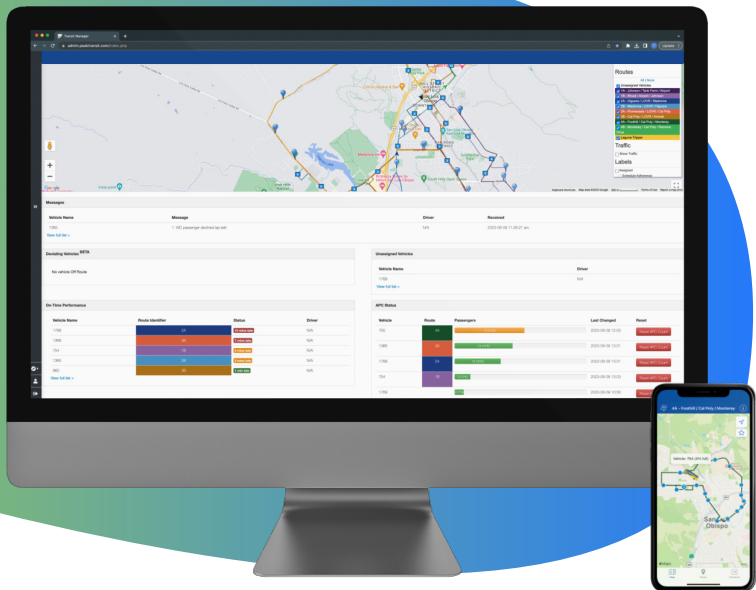
Are you ready to elevate your airport shuttle services from a logistical challenge to a traveler's delight? With Peak Transit, you're not just managing shuttles; you're enhancing journeys for every passenger.



Airport transit can be chaotic & demanding.

Inconsistent shuttle schedules, unpredictable passenger volumes, outdated communication systems, and more, lead to stressed staff and disappointed travelers.

Un-complicate with Peak Transit



Simple-to-Use CAD/AVL Software: Experience precise shuttle tracking and streamlined schedule adjustments for unmatched operational control. Ensure your shuttles are perfectly timed to meet demand throughout the day, without the complexities of flight integrations.

Custom-Branded Passenger Apps: Offer real-time shuttle tracking in the palm of travelers' hands, enhancing their experience with convenient access to schedule updates and shuttle locations.

Mobile Data Terminals: Equip your airport shuttles with advanced terminals that enhance communication and data management for drivers, improving punctuality and reducing wait times.

Automatic Passenger Counting: Employ accurate data to manage shuttle capacity efficiently, ensuring optimal utilization and timely adjustments to service, based on actual passenger needs.

Digital Signage: Engage and inform travelers with dynamic, real-time displays at shuttle stops, providing them with up-to-the-minute travel information and alerts, independent of flight schedules.

Automatic Voice Announcements: Deliver consistent, clear communication in noisy airport environments, ensuring crucial information is conveyed effectively throughout the transit area.

Take Your Next Step: Visit peaktransit.com and schedule a demo today!